



April 2019



From the Chairman:

Bonsai, I think, is mostly a relaxing and calming hobby that puts one in touch with your fellow likeminded beings, nature and the universe. With the ESCOM blackouts, the upcoming election, economic growth predicted at below 1% and the looming recession, I think we all need a lot of distressing and relaxing and this might just possibly lead to a bumper crop of new Bonsai being created.

EBS is 47 years old this year and in order to grow and evolve and be the very best we can, we need you to offer your ideas, suggestions and above all your help to make EBS the best club in SA.

Raffle Table

Thank you to Lynn Reynolds for stones, pots and plants and to Hansie Bekker for magazines was raffled at our January and February meetings.

Hobby-X

Even though I thanked everyone on the WhatsApp group, I feel I need to thank all again because not all members are on WhatsApp and because these all members did a sterling job that led to a successful Hobby-X. Dave and Calvin for moving everything to and from Hospice to the Dome. For all those that helped with setting up and dismantling the stand. Those that did duty: Yatish, Kanti, Jennifer G, Kathy S, Kathy T, Gina, Hansie, Dave, Naseem, Gerhard B and Keith. To Jennifer G, Kathy S, Kathy T and Fred O that gave trees for the show-without you there wouldn't have been one!

To Fred O, Clive K and Keith that brought trees to work on-thank you –it really created a lot of interest.

And to the star of the show- The biggest, hugest thank you to Reina O that manned the stand for 3 and a half days full time! Reina sold raffle tickets like no one I have ever seen. Thank you, Reina.



Q&A with the public, selling raffle ticket and many interested onlookers visited our exhibition stand.



EBS welcomes you

EBS Shop

Dave and myself have secured 37 new Bonsai pots for the EBS shop. Amongst them some really well priced cascade pots and quite a large number of shallow pots suitable for group and forest plantings.

There is also a large amount of new Bonsai wire in all gauges.

Everybody's always looking for turntables-there are 5 new ones in stock, so bring your moolah to the meeting in April and shop, shop, shop. Hopefully I will be able to take photos of all new stock for website this coming week.

Website

A big thank you to Naseem that has updated our website, that is now current in all aspects.

Sales Table

Hansie Bekker has notified me that he will be selling trees, wire and maybe some pots.

APRIL EBS CLUB MEETING 13 April 2019

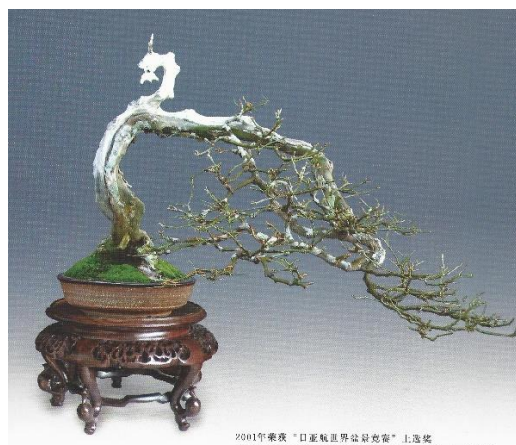
Theme ROCKPLANTING-Andre De Canha – the master of planting on- and in- rock will be doing a demo on planting a fig on a rock. Please bring your rock planting to show and stand a chance of winning our monthly EBS voucher to spend at EBS shop.

BRAT Pretoria 30 March 2019

The BRAT day presented by Pretoria Bonsai Kai was held on 30th March in Waverley. It was a well-attended event with a larger than normal amount of fine quality trees on show for judging, viewing and enjoyment.

The raffle section, besides the normal raffles, also included a large selection of good trees to be won in the R50 raffle.

The action-packed day had each of Shibui, Pretoria Bonsai Kai, Midway and our own EBS doing an hour long talk and demonstration. Quite a long time to keep an audience captured! Each club spoke on 2 styles. Fred and Shaundre had to do Cascade and Semi Cascade. Due to an emergency at work Fred had to bow out. Tommy was approached, but had to prepare for his own private course, so couldn't help. Dave Wilson stepped in and did a great job of wiring his Juniper whilst at the same time giving supplementary information to the very well researched talk by Lynn Reynolds. Lynn and Kathy T compiled a captivating slide show with a large range of photos and drawings of a variety of cascades and semi cascades. Shaundre came prepared with 2 wired Junipers and whilst he bent and styled branches gave a talk on the "whys and how's", and his thought process in his designing of the trees. A really great team effort that everyone in our club can be proud of.



EBS WINTER SHOW 8-9th June 2019

Due to the ABC convention in October the committee has decided to move our yearly show to 8-9th June at our normal Hospice Wits venue. So now is the time to start thinking of which trees you would like to show and to start getting them show ready. Not only deciduous trees showing branch structure and ramification, but also some trees that might still have some late Autumn colour and some lush evergreens to add some spice and colour.

EBS Club AGM 8th June 2019

The EBS AGM will be held from 10 am to 11 am on Saturday 8th June during our EBS WINTER SHOW.

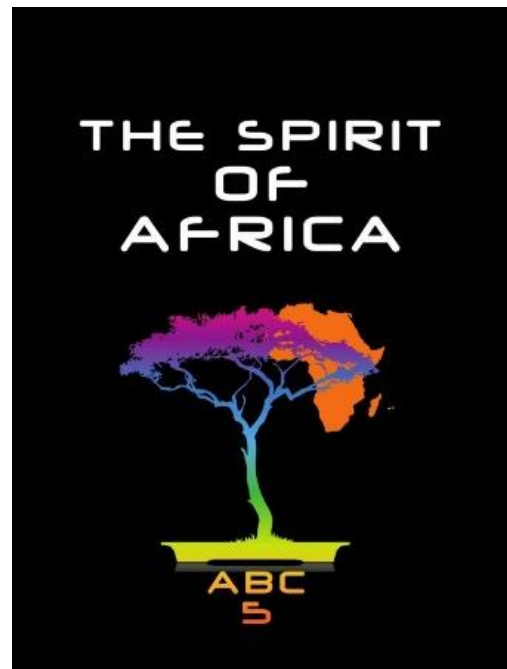
AFRICAN BONSAI CONVENTION (ABC5)

24-27 October 2019

To be held at Safari Garden Centre in
Lynnwood, Pretoria

The Selection Committee is looking for world
class trees to show;

Each paid up SABA individual may show up
to 10 trees, any size or species. Deadline to
submit photos is 1 AUGUST 2019. Photos to
be accompanied by name of artist, tree
species, size, height, width, depth and
estimated age. Please email all submissions
to hannesthel@gmail.com



The main international artist's include Mauro Stemberger (Italy), Raphael Torres (Spain) and Robert Mahler (USA).

Information at [http:// www.africanbonsai.org/ABC5 Pretoria.html](http://www.africanbonsai.org/ABC5 Pretoria.html)

To highlight the pricing:

Full convention early bird available until 31 July is R1975 per person.

Daily registration is available too, at R600 per day (4 days in total, so the early bird registration offers a saving of almost 20%)

Workshops are to be booked additionally at R500 per workshop (2 on Thursday, 4 on Friday and 4 on Saturday)

Three international artists will be in attendance, over and above several local artists and promises to be an exceptional experience.

Please visit the website for more information

New Talent 11 May 2019

All members with less than 10 years' experience to have the opportunity to compete and the winner to represent EBS at a provincial level.

Until next

Anthony.

General:

Workshops

The club offers a workshop every meeting and members are encouraged to bring trees for working on and advise.

Remember bonsai is best supported through doing.

EBS on the web

Website: <http://www.ebs.org.za/>

Facebook:

<https://www.facebook.com/easternbonsaisociety>

Shop

The Club shop will be open from 11:30 - 12:30hrs, preceding a club meeting, at Hospice.

Library

The Club library will be open from 11:30 - 12:30hrs preceding a club meeting, at Hospice. Please note books are taken out on a monthly basis. Kindly return books on time.

Brat News

2019		
29 June	Midway	AGM & New Talent
31 August	Shibui	Top 10
24-27 October	Pretoria	ABC 5 Convention

Brat attendance fee is R120, which includes tea and lunch.
Brat Facebook page
<https://www.facebook.com/Brat.page>

Cake Roster

Name	Month
Anthony	April
Gina	May
Keith	June

Every meeting is a mini show

Lucky draw on all trees brought by members to work on. Prize R50 voucher for EBS shop.

Raffle table

Any of those trees or pots that are in your way could find a happy new owner via the raffle table. Any bonsai or non-bonsai related items are welcome.

Thank you to people who brought items for the raffle table. It is highly appreciated. Raffle tickets are still R5.00 each. The raffle table will have plenty of items available- support the club and buy raffle tickets.

Things to do for April

- Check for pests and diseases. Remove weeds.
- Water carefully.
- Fertilize deciduous trees carefully.
- Check for wire bite and remove where necessary.
- Style junipers. Cut back longer shoots and wire.

Last chance to repot flowering species like wisteria, crab-apple, pomegranate, pyracantha, cotoneaster, citrus and quince.

- Repot conifers and evergreens.
- Prune evergreens.

Cut off growing tips of quercus species. This encourages bud back.
Carve deadwood on conifers.

*Conditions differ from region to region. Consult with local club.

Committee Members:

Chairman	Anthony Bosman	084 557 7348
Vice Chairman	Dave Wilson	082 923 2538
Secretary	Kathy Tinney	072 999 9672
Treasurer	Alan Russell	082 766 0670
BRAT Representative	Dave Wilson	082 923 2538
PR & Judging	Tommy Ramiah	082 451 6283
Set up/ Presentations	Clive Kay	082 852 0228
New members & Membership	Jennifer Georgeson	082 336 5425
Website	Naseem Ebrahim	084 401 2379
Raffle & Tree Sales	Yatish Poonee	
SABA Representative	Hansie Bekker	082 820 4306
Facebook	Annetia Russell	

Next committee meeting for Saturday 13 April 2019 at 11:00hrs.